

**JEFFERSON COUNTY AGRICULTURAL DISTRICT #2 NORTH - MAP 1**  
**ALEXANDRIA BAY, CHIPPEWA BAY, MUSKELLUNGE LAKE, AND REDWOOD QUADRANGLES**

COUNTY: JEFFERSON  
 DISTRICT NUMBER: 2, NORTH  
 TOWNS: ALEXANDRIA, ANTWERP, BROWNVILLE, CAPE VINCENT, CLAYTON, LERAY, LYME, ORLEANS, PAMELIA, PHILADELPHIA, and THERESA

SHEET 1 OF 8

7 1/2' QUADRANGLES

ALEXANDRIA BAY	HENDERSON BAY
ANTWERP	LA FARGEVILLE
BLACK RIVER	MUSKELLUNGE LAKE
BROWNVILLE	NATURAL DAM
CAPE VINCENT NORTH	NORTH WILNA
CAPE VINCENT SOUTH	PHILADELPHIA
CHAUMONT	POINT PENINSULA
CHIPPEWA BAY	REDWOOD
CLAYTON	SACKETS HARBOR
DEFERIET	SAINT LAWRENCE
DEXTER	THERESA
GANANOQUE	THOUSAND ISLAND PARK

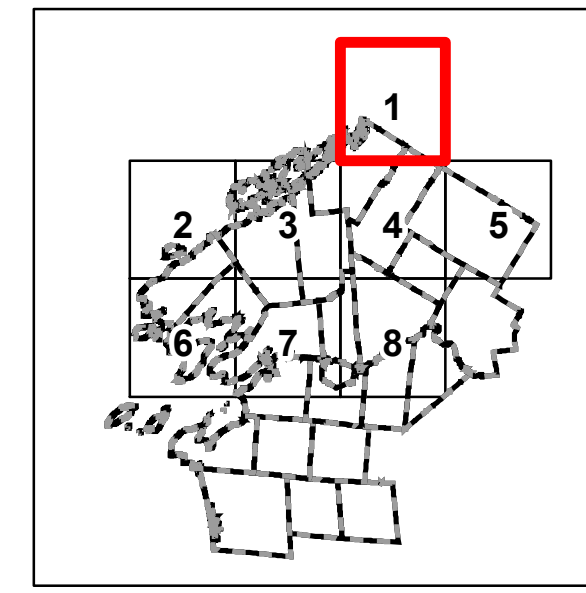
DATE	MAP STATUS-IRIS	303b ADDITIONS DATES
_____	CERTIFICATION	_____
_____	_____	_____
_____	_____	_____
_____	_____	_____
_____	_____	_____
_____	_____	_____
_____	_____	_____
_____	_____	_____
_____	_____	_____

**Roads**

- Interstate
- Federal
- State
- County
- Local
- Private
- Map Grid
- Quadrangle Index

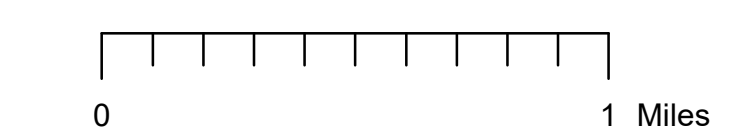
**Other Symbols**

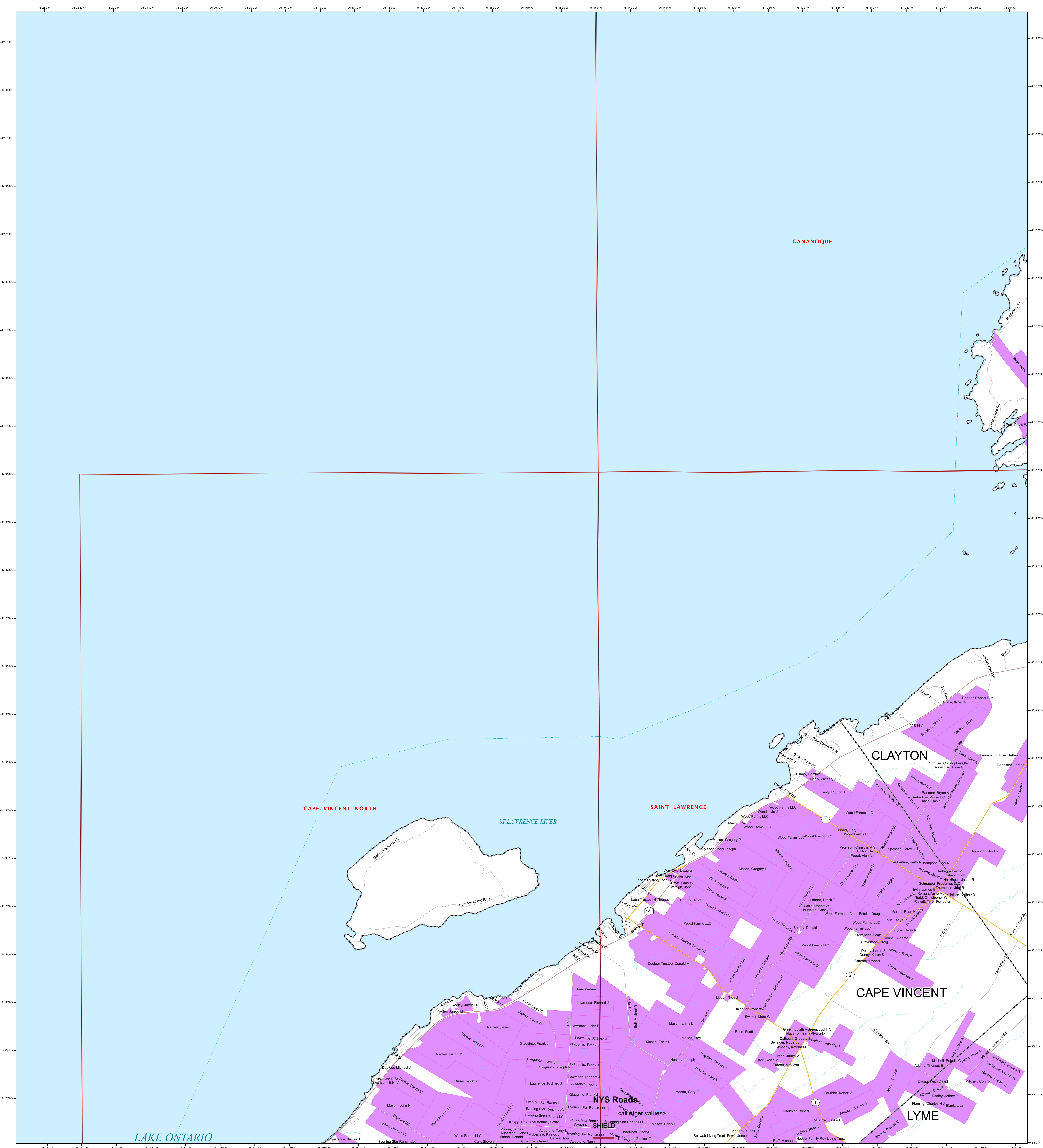
- CT
- Hamlets
- Ag District Southeast # 1
- Ag District North # 2
- Ag District Southwest #3
- Municipal Boundaries
- Fort Drum Boundary
- County Boundaries
- Rivers / Streams
- Waterbodies



Map prepared by the Jefferson County Department of Planning  
 New York Central State Plane coordinate system (feet)  
 1983 North American datum

**Data Sources**  
 Jefferson County Real Property Tax Services - 2023 Parcels  
 Fort Drum Engineering  
 NYS Office of Cyber Security and Critical Infrastructure Coordination  
 US Census Bureau





**JEFFERSON COUNTY AGRICULTURAL DISTRICT #2 NORTH - MAP 2**  
**CAPE VINCENT NORTH, GANANOQUE, AND SAINT LAWRENCE QUADRANGLES**

COUNTY: JEFFERSON

DISTRICT NUMBER: 2, NORTH

TOWNS: ALEXANDRIA, ANTWERP, BROWNVILLE, CAPE VINCENT, CLAYTON, LERAY, LYME, ORLEANS, PAMELIA, PHILADELPHIA, and THERESA

CREATION DATE: 1/22/1984

SHEET 2 OF 8

303b ADDITIONS DATES

7 1/2' QUADRANGLES

ALEXANDRIA BAY	HENDERSON BAY
ANTWERP	LA FARGEVILLE
BLACK RIVER	MUSKELLUNGE LAKE
BROWNVILLE	NATURAL DAM
CAPE VINCENT NORTH	NORTH WILLNA
CAPE VINCENT SOUTH	PHILADELPHIA
CHAUMONT	POINT PENINSULA
CHIPPEWA BAY	REDWOOD
CLAYTON	SACKETS HARBOR
DEFERIET	SAINT LAWRENCE
DEXTER	THERESA
GANANOQUE	THOUSAND ISLAND PARK

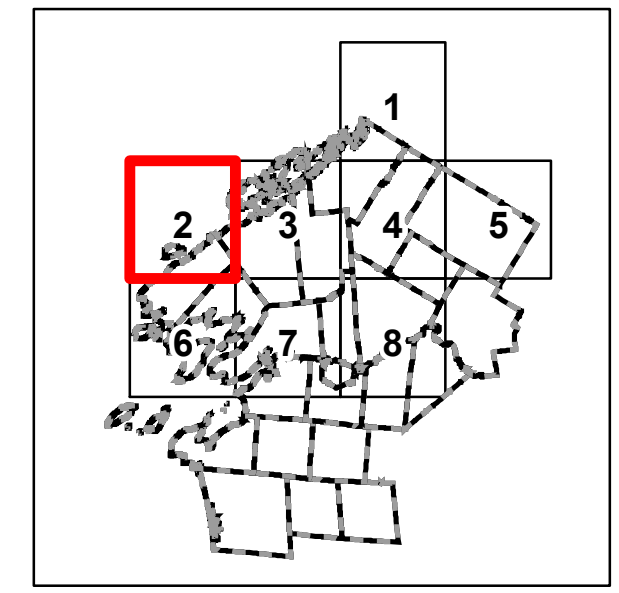
DATE	MAP STATUS-IRIS	303b ADDITIONS DATES
_____	CERTIFICATION	_____
_____	_____	_____
_____	_____	_____
_____	_____	_____
_____	_____	_____
_____	_____	_____
_____	_____	_____
_____	_____	_____
_____	_____	_____

**Roads**

- Interstate
- Federal
- State
- County
- Local
- Private
- Map Grid
- Quadrangle Index

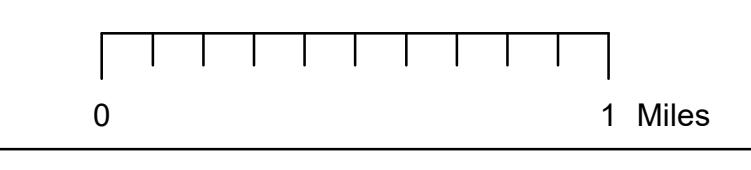
**Other Values**

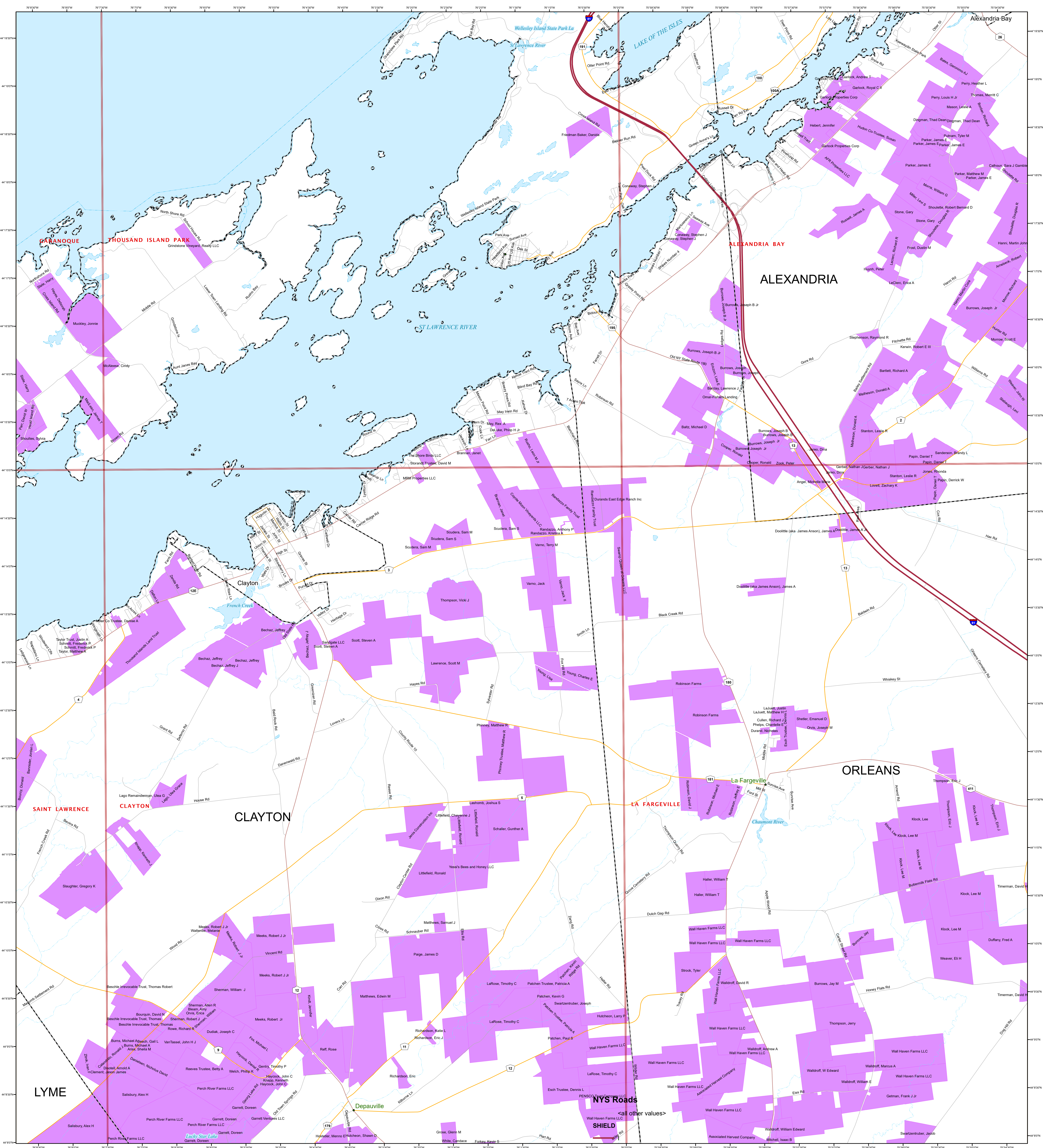
- CT
- Hamlets
- Ag District Southeast # 1
- Ag District North # 2
- Ag District Southwest #3
- Municipal Boundaries
- Fort Drum Boundary
- County Boundaries
- Rivers / Streams
- Waterbodies



Map prepared by the Jefferson County Department of Planning  
 New York Central State Plane coordinate system (feet)  
 1983 North American datum

**Data Sources**  
 Jefferson County Real Property Tax Services - 2023 Parcels  
 Fort Drum Engineering  
 NYS Office of Cyber Security and Critical Infrastructure Coordination  
 US Census Bureau





**JEFFERSON COUNTY AGRICULTURAL DISTRICT #2 NORTH - MAP 3**  
**ALEXANDRIA BAY, CLAYTON, GANANOQUE, LA FARGEVILLE, SAINT LAWRENCE, AND THOUSAND ISLAND PARK QUADRANGLES**

COUNTY: JEFFERSON  
 DISTRICT NUMBER: 2, NORTH  
 TOWNS: ALEXANDRIA, ANTWERP, BROWNVILLE, CAPE VINCENT, CLAYTON, LERAY, LYME, ORLEANS, PAMELIA, PHILADELPHIA, and THERESA  
 CREATION DATE: 1/22/1984

SHEET 3 OF 8

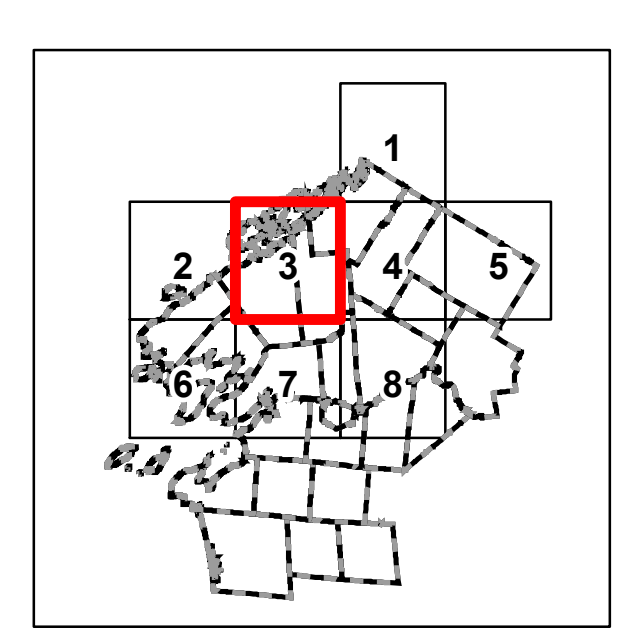
7 1/2' QUADRANGLES	DATE	MAP STATUS-IRIS	303b ADDITIONS DATES
ALEXANDRIA BAY		CERTIFICATION	
ANTWERP			
BROWNVILLE			
CAPE VINCENT NORTH			
CAPE VINCENT SOUTH			
CHAUMONT			
CHIPPewa BAY			
CLAYTON			
DEFERIET			
DEXTER			
GANANOQUE			
HENDERSON BAY			
LA FARGEVILLE			
MUSKELLUNGE LAKE			
NATURAL DAM			
NORTH WILNA			
PHILADELPHIA			
POINT PENINSULA			
REDWOOD			
SACKETTS HARBOR			
SAINT LAWRENCE			
THERESA			
THOUSAND ISLAND PARK			

**Roads**

- Interstate
- Federal
- State
- County
- Local
- Private
- Map Grid
- Quadrangle Index

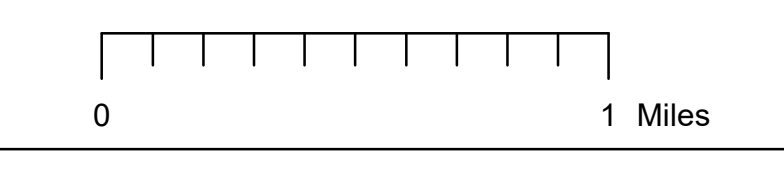
**Other Values**

- Hamlets
- Ag District Southeast # 1
- Ag District North # 2
- Ag District Southwest #3
- Municipal Boundaries
- Fort Drum Boundary
- County Boundaries
- Rivers / Streams
- Waterbodies

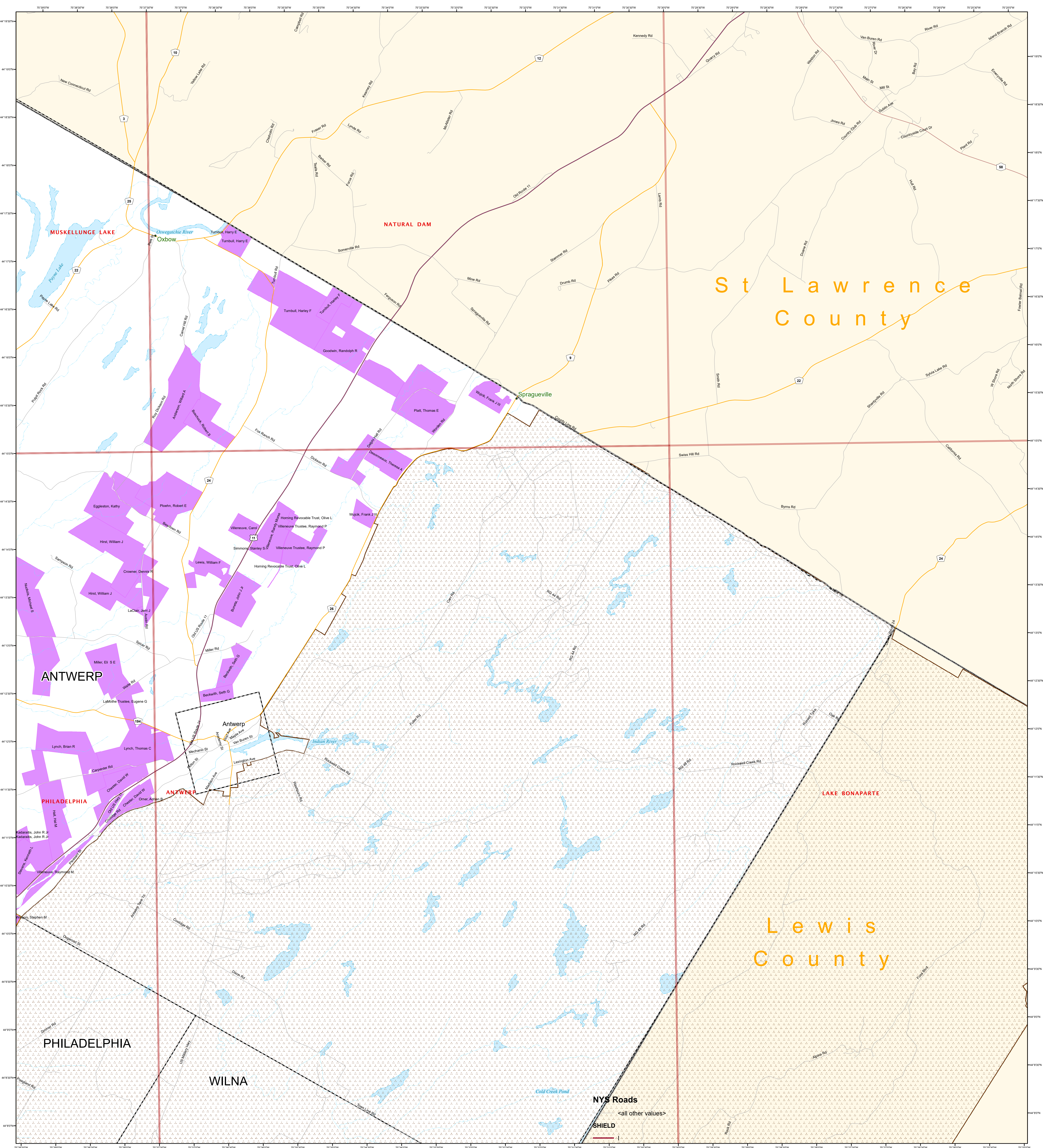


Map prepared by the Jefferson County Department of Planning  
 New York Central State Plane coordinate system (feet)  
 1983 North American datum

**Data Sources**  
 Jefferson County Real Property Tax Services - 2023 Parcels  
 Fort Drum Engineering  
 NYS Office of Cyber Security and Critical Infrastructure Coordination  
 US Census Bureau







**JEFFERSON COUNTY AGRICULTURAL DISTRICT #2 NORTH - MAP 5**  
**ANTWERP, MUSKELLUNGE LAKE, NATURAL DAM, AND PHILADELPHIA QUADRANGLES**

COUNTY: JEFFERSON  
 DISTRICT NUMBER: 2, NORTH  
 TOWNS: ALEXANDRIA, ANTWERP, BROWNVILLE, CAPE VINCENT, CLAYTON, LERAY, LYME, ORLEANS, PAMELIA, PHILADELPHIA, and THERESA

SHEET 5 OF 8

7 1/2' QUADRANGLES

ALEXANDRIA BAY	HENDERSON BAY
ANTWERP	LA FARGEVILLE
BROWNVILLE	MUSKELLUNGE LAKE
CAPE VINCENT NORTH	NATURAL DAM
CAPE VINCENT SOUTH	NORTH WILNA
CHAUMONT	PHILADELPHIA
CHIPPEWA BAY	POINT PENINSULA
CLAYTON	REDWOOD
DEFERRIET	SACKETS HARBOR
DEXTER	SAINT LAWRENCE
GANANOQUE	THERESA
	THOUSAND ISLAND PARK

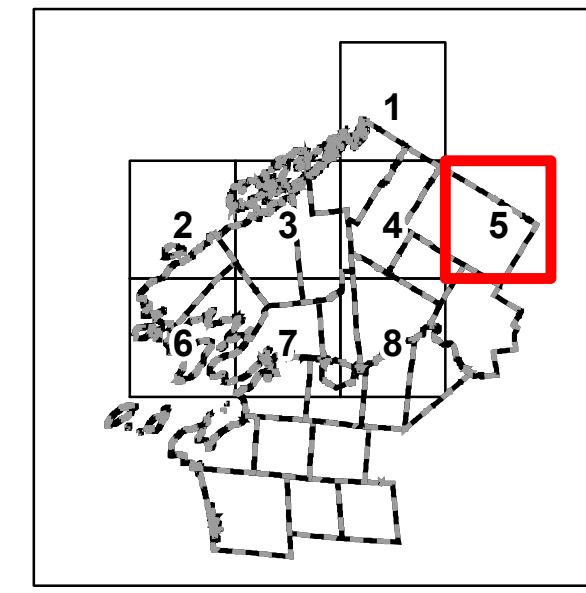
DATE	MAP STATUS-IRIS	303b ADDITIONS DATES
	CERTIFICATION	

**Roads**

- Interstate
- Federal
- State
- County
- Local
- Private
- Map Grid
- Quadrangle Index

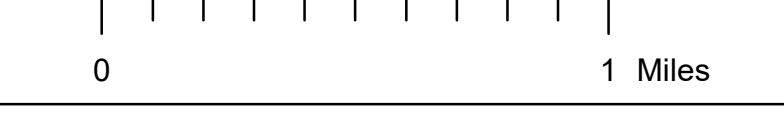
**Other Symbols**

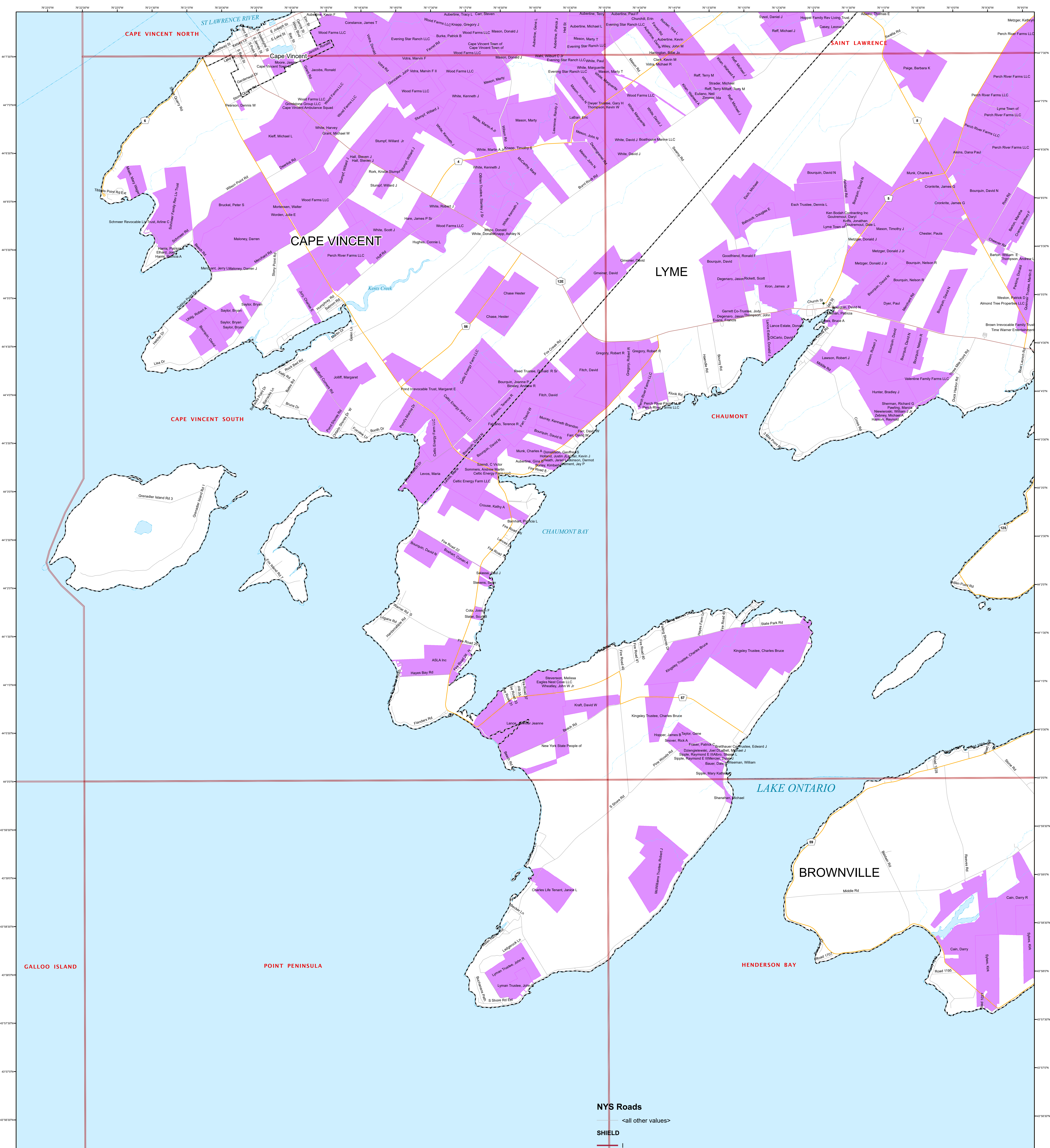
- CT
- Hamlets
- Ag District Southeast # 1
- Ag District North # 2
- Ag District Southwest #3
- Municipal Boundaries
- Fort Drum Boundary
- County Boundaries
- Rivers / Streams
- Waterbodies



Map prepared by the Jefferson County Department of Planning  
 New York Central State Plane coordinate system (feet)  
 1983 North American datum

**Data Sources**  
 Jefferson County Real Property Tax Services - 2023 Parcels  
 Fort Drum Engineering  
 NYS Office of Cyber Security and Critical Infrastructure Coordination  
 US Census Bureau





**NYS Roads**  
 <all other values>  
**SHIELD**

**JEFFERSON COUNTY AGRICULTURAL DISTRICT #2 NORTH - MAP 6**  
 CAPE VINCENT NORTH, CAPE VINCENT SOUTH, CHAUMONT, HENDERSON BAY, POINT PENINSULA, AND SAINT LAWRENCE QUADRANGLES

COUNTY: JEFFERSON  
 DISTRICT NUMBER: 2, NORTH  
 TOWNS: ALEXANDRIA, ANTWERP, BROWNVILLE, CAPE VINCENT, CLAYTON, LERAY, LYME, ORLEANS, PAMELIA, PHILADELPHIA, and THERESA  
 CREATION DATE: 1/22/1984  
 SHEET 6 OF 8

7 1/2' QUADRANGLES	DATE	MAP STATUS-IRIS	303b ADDITIONS DATES
ALEXANDRIA BAY		CERTIFICATION	
ANTWERP			
BROWNVILLE			
CAPE VINCENT NORTH			
CAPE VINCENT SOUTH			
CHAUMONT			
CHIPPewa BAY			
CLAYTON			
DEFERRET			
DEXTER			
GANANOQUE			
HENDERSON BAY			
LA FARGEVILLE			
MUSKELLUNGE LAKE			
NATURAL DAM			
NORTH WILNA			
PHILADELPHIA			
POINT PENINSULA			
REDWOOD			
SACKETTS HARBOR			
SAINT LAWRENCE			
THERESA			
THOUSAND ISLAND PARK			

Scale: 1:24,000  
 0 1 Miles

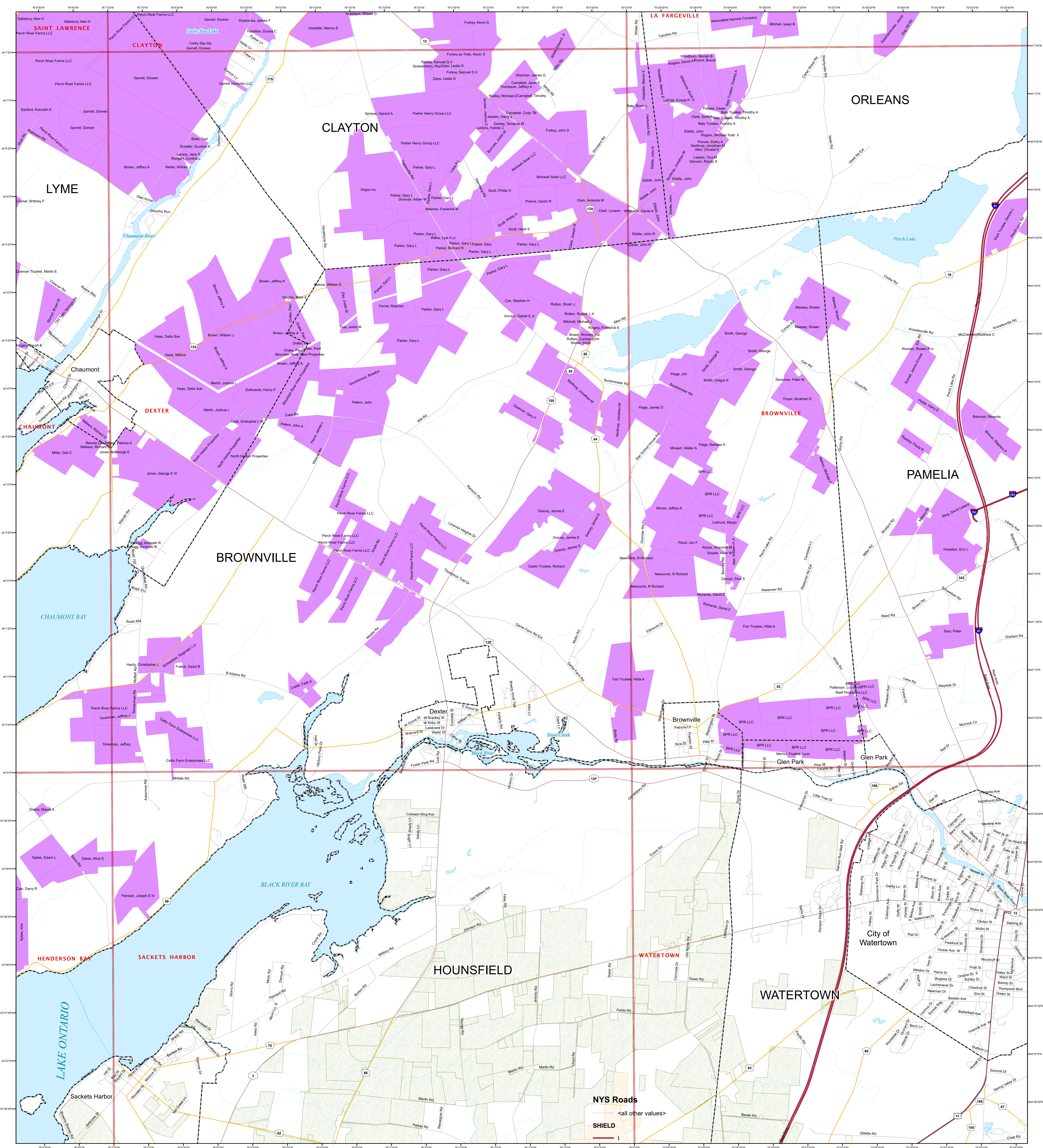
**Roads**

- Interstate
- Federal
- State
- County
- Local
- Private
- Map Grid
- Quadrangle Index

- CT
- Hamlets
- Ag District Southeast # 1
- Ag District North # 2
- Ag District Southwest #3
- Municipal Boundaries
- Fort Drum Boundary
- County Boundaries
- Rivers / Streams
- Waterbodies

Map prepared by the Jefferson County Department of Planning  
 New York Central State Plane coordinate system (feet)  
 1983 North American datum

**Data Sources**  
 Jefferson County Real Property Tax Services - 2023 Parcels  
 Fort Drum Engineering  
 NYS Office of Cyber Security and Critical Infrastructure Coordination  
 US Census Bureau



**JEFFERSON COUNTY AGRICULTURAL DISTRICT #2 NORTH - MAP 7**

**BROWNVILLE, CHAUMONT, CLAYTON, DEXTER, HENDERSON BAY, LA FARGEVILLE, SACKETS HARBOR, AND SAINT LAWRENCE QUADRANGLES**

COUNTY: JEFFERSON  
 DISTRICT NUMBER: 2, NORTH  
 TOWNS: ALEXANDRIA, BROWNVILLE, CAPE VINCENT, CLAYTON, LERAY, LYME, ORLEANS, PAMELIA, PHILADELPHIA, and THERESA

SHEET 7 OF 8

7 1/2' QUADRANGLES

ALEXANDRIA BAY	HENDERSON BAY
ANTWERP	LA FARGEVILLE
BROWNVILLE	MUSKELLUNGE LAKE
CAPE VINCENT NORTH	NATURAL DAM
CAPE VINCENT SOUTH	PHILADELPHIA
CHAUMONT	POINT PENINSULA
CHIPPewa BAY	REDWOOD
CLAYTON	SACKETS HARBOR
DEFERRET	SAINT LAWRENCE
DEXTER	THERESA
GANANOQUE	THOUSAND ISLAND PARK

DATE	MAP STATUS-IRIS
_____	CERTIFICATION
_____	_____
_____	_____
_____	_____
_____	_____
_____	_____
_____	_____
_____	_____
_____	_____

303b ADDITIONS DATES
_____
_____
_____
_____
_____
_____
_____
_____
_____
_____

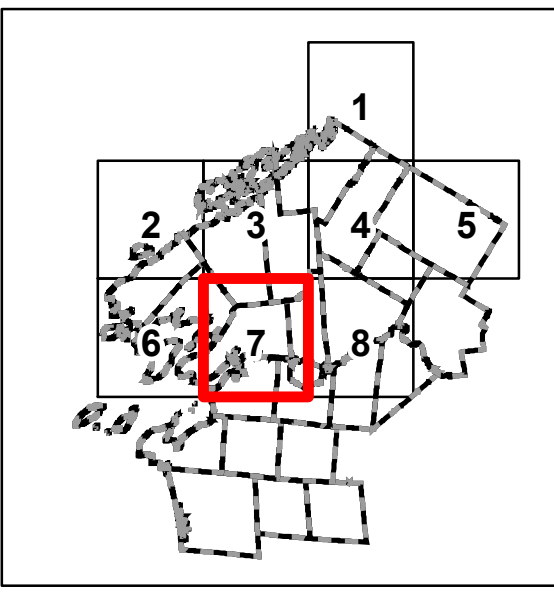
**Roads**

- Interstate
- Federal
- State
- County
- Local
- Private
- Map Grid
- Quadrangle Index

**NYS Roads**

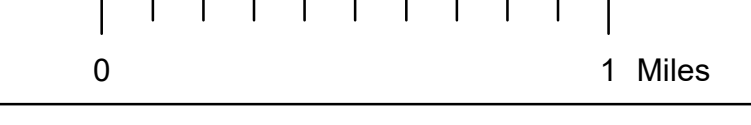
- CT
- <all other values>
- SHIELD

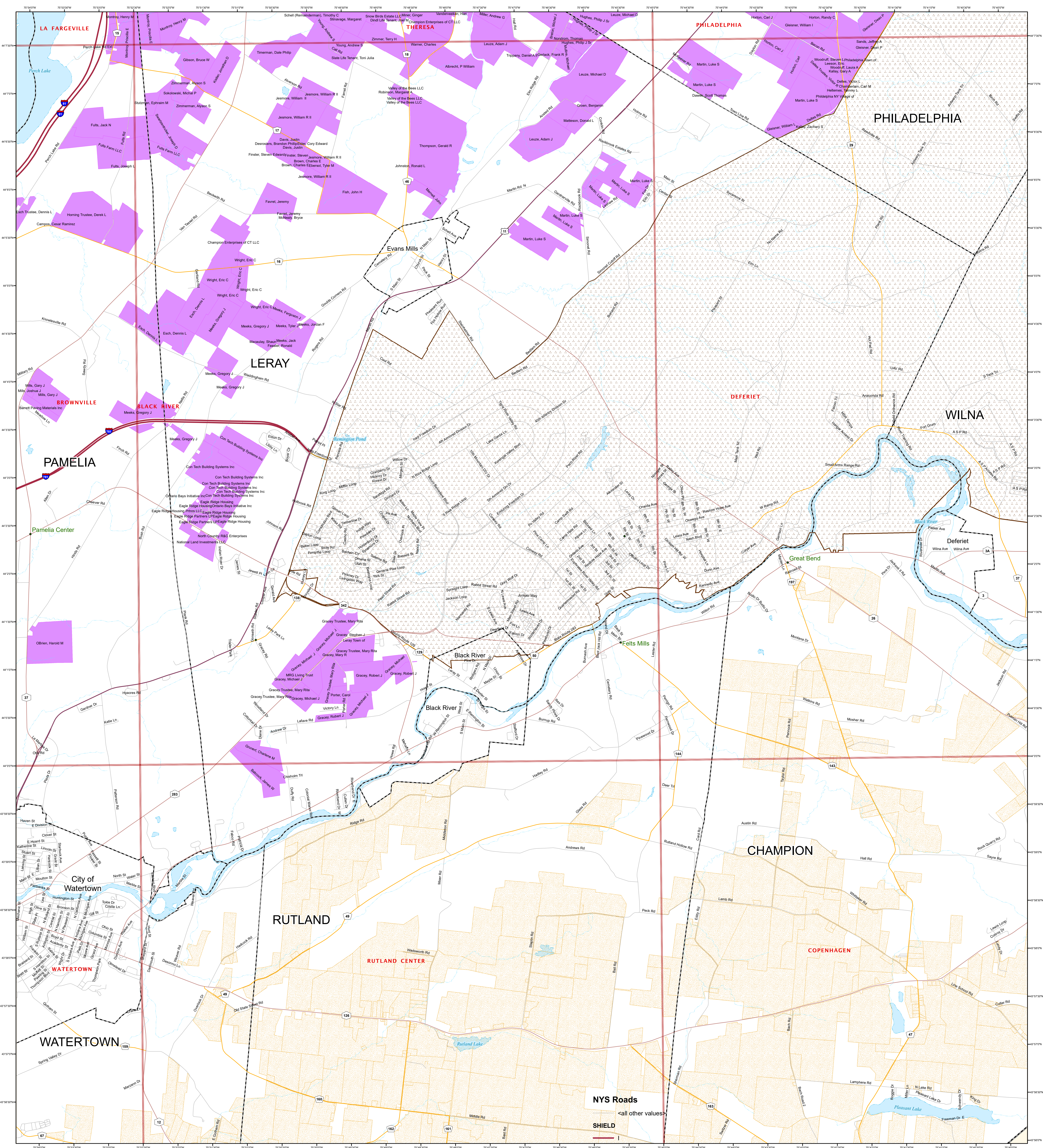
- Hamlets
- Ag District Southeast # 1
- Ag District North # 2
- Ag District Southwest #3
- Municipal Boundaries
- Fort Drum Boundary
- County Boundaries
- Rivers / Streams
- Waterbodies



Map prepared by the Jefferson County Department of Planning  
 New York Central State Plane coordinate system (feet)  
 1983 North American datum

**Data Sources**  
 Jefferson County Real Property Tax Services - 2023 Parcels  
 Fort Drum Engineering  
 NYS Office of Cyber Security and Critical Infrastructure Coordination  
 US Census Bureau





**JEFFERSON COUNTY AGRICULTURAL DISTRICT #2 NORTH - MAP 8**  
**BLACK RIVER, BROWNVILLE, DEFERIET, LA FARGEVILLE, PHILADELPHIA, AND THERESA QUADRANGLES**

COUNTY: JEFFERSON  
 DISTRICT NUMBER: 2, NORTH  
 TOWNS: ALEXANDRIA, ANTWERP, BROWNVILLE, CAPE VINCENT, CLAYTON, LERAY, LYME, ORLEANS, PAMELIA, PHILADELPHIA, and THERESA

SHEET 8 OF 8

7 1/2' QUADRANGLES

ALEXANDRIA BAY	HENDERSON BAY
ANTWERP	LA FARGEVILLE
BROWNVILLE	MUSKELLUNGE LAKE
CAPE VINCENT NORTH	NATURAL DAM
CAPE VINCENT SOUTH	PHILADELPHIA
CHAUMONT	POINT PENINSULA
CHIPPEWA BAY	REDWOOD
CLAYTON	SACKETTS HARBOR
DEFERIET	SAINT LAWRENCE
DEXTER	THERESA
GANANOQUE	THOUSAND ISLAND PARK

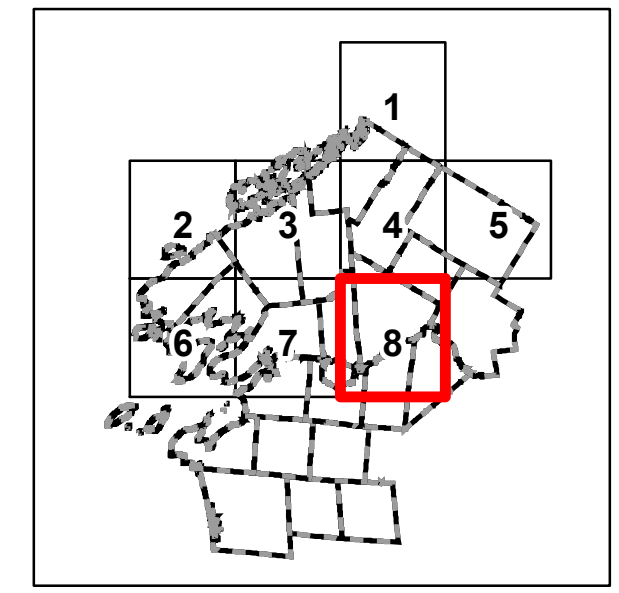
DATE	MAP STATUS-IRIS	303b ADDITIONS DATES
_____	CERTIFICATION	_____
_____		_____
_____		_____
_____		_____
_____		_____
_____		_____

**Roads**

- Interstate
- Federal
- State
- County
- Local
- Private
- Map Grid
- Quadrangle Index

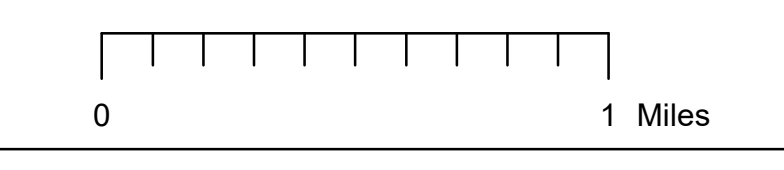
**Other Symbols**

- Hamlets
- Ag District Southeast # 1
- Ag District North # 2
- Ag District Southwest #3
- Municipal Boundaries
- Fort Drum Boundary
- County Boundaries
- Rivers / Streams
- Waterbodies

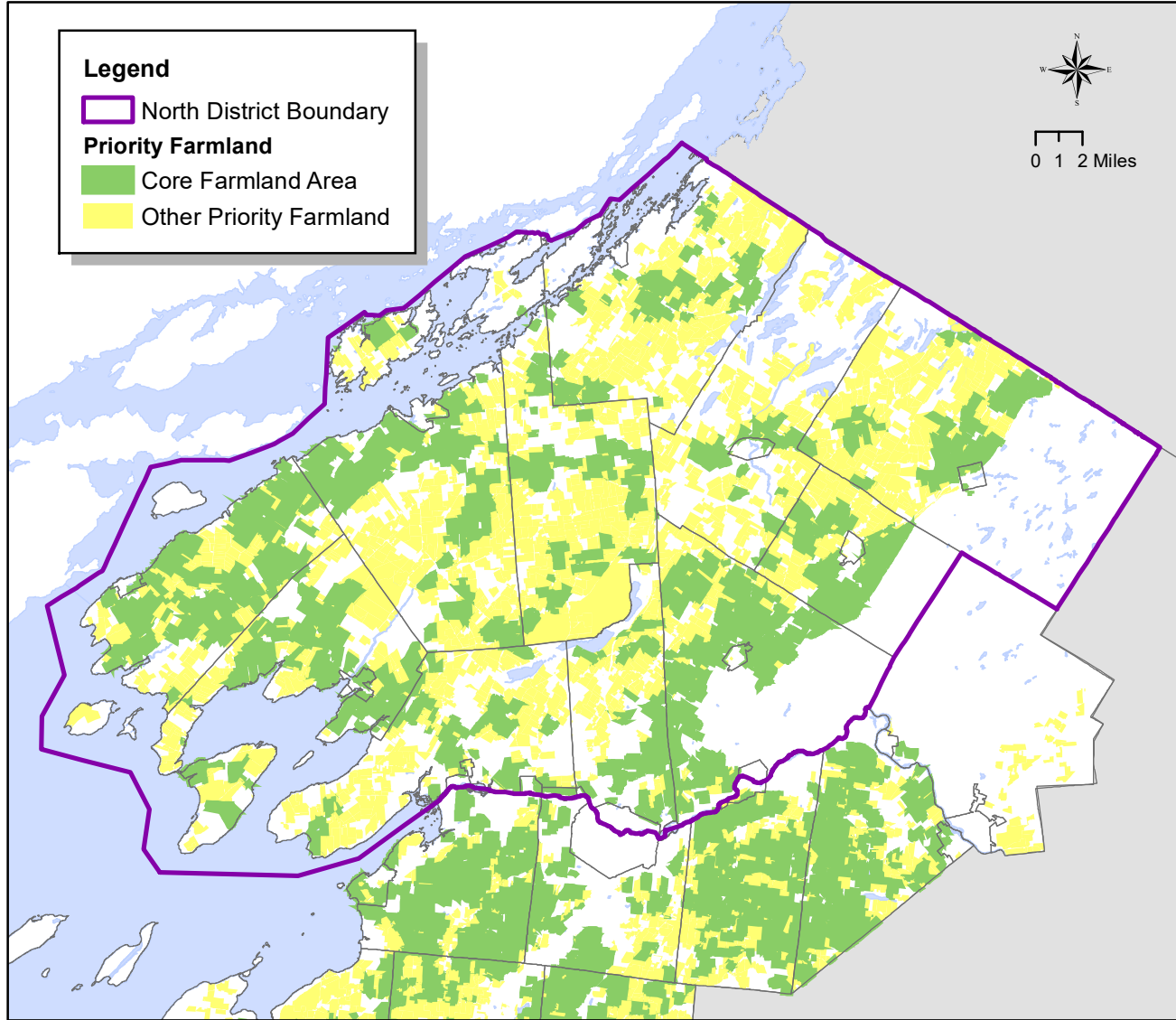


Map prepared by the Jefferson County Department of Planning  
 New York Central State Plane coordinate system (feet)  
 1983 North American datum

**Data Sources**  
 Jefferson County Real Property Tax Services - 2023 Parcels  
 Fort Drum Engineering  
 NYS Office of Cyber Security and Critical Infrastructure Coordination  
 US Census Bureau



## North Agricultural District Priority Farmland



Sources: Jefferson County Real Property Tax Services, Jefferson County Code Office, NYS Office of Cyber Security and Critical Infrastructure Coordination